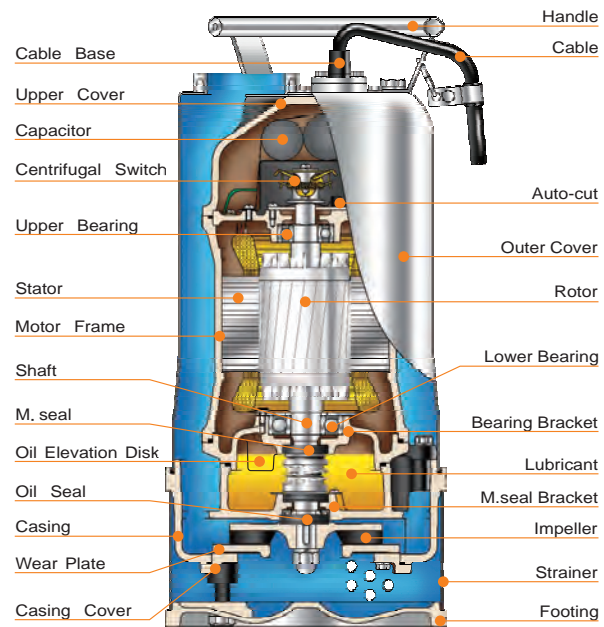
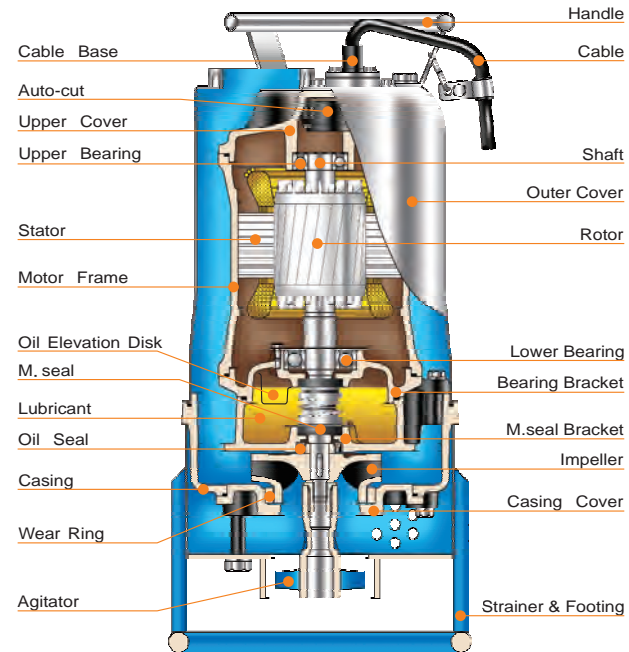


AS SERIES SECTIONAL DRAWING



AG SERIES SECTIONAL DRAWING



OPTIONAL ACCESSORIES

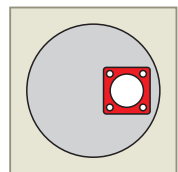
Discharge inch (mm)	Lower PCD*Holes	Hose	Male Thread	Flange	Double Flange Set Female Thread	Center line Flange
2" (50)	98*4	LOH2-98	LOT2-98	LOTF2-105-125*98	LKTF2-105-125*98	
3" (80)	98*4	LOH3-98	LOT3-98	LOF3-150*98	LKF3-150*98	LOC3-150*98
				LOTF3-145-160*98	LKTF3-145-160*98	LOCA3-140-160*98
4" (100)	98*4	LOH4-98	LOT4-98	LOTF4-165-190*98	LKTF4-165-190*98	LOCA4-165-190*98

Nomenclature :

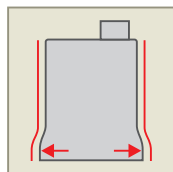
LOH 2 - 98
 Type Discharge PCD-Circle
 (inch) (mm)

LO(T)F 2 - 175-180 * 98
 Type Discharge Upper PCD-Strip Lower PCD-Circle
 (inch) (mm) (mm)

LOC(A) 3 - 140-160 * 98
 Type Discharge Upper PCD-Strip Lower PCD-Circle
 (inch) (mm) (mm)



Patented flange connection



Strengthened casing design

New Structure Patent No. M309025

1. The stainless steel flange connection is directly welded to the outer casing, making the output head section sturdy and less prone to fracture. A wide range of output adapters can be selected to meet the applications.
2. Employs a strengthened stainless steel casing design which can effectively reduce dents caused by collision or crash impacts.



50Hz & 60Hz

Innovation • Professionalism • Service



AS SERIES
 SUBMERSIBLE DEWATERING PUMPS

AG SERIES
 SUBMERSIBLE SLURRY DEWATERING PUMPS

NEW PRODUCT

AGENT :

AS SERIES SUBMERSIBLE DEWATERING PUMPS

AS SERIES FEATURE

1. A new 3D impeller design increasing flow capacity by 15-20%.
2. Designed for civil engineering applications, easy portability, double outer casing water cooling motor make it possible to run the pump to low water level.
3. IP68 standard for waterproof structure, automatic rest motor protector, and double mechanical seal made of silicon carbide. Very durable and abrasion resistance pump.
4. High Chrome Alloy steel impeller, wear plate and wear rings with a hardness 55-60 Rockwell. Harden and abrasion resistant.
5. Multi-impeller design suitable for high head with small capacity and low head with large capacity application requirement.
6. Special series connection casing cover for pumping against high heads or dry pit applications. (AS 2-5HP)



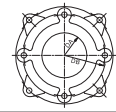
H Type Impeller N/L Type Impeller Enhanced Performance

AS SERIES APPLICATIONS

1. Civil engineering, tunnel, mining and other infrastructure water drainage applications.
2. Manhole sewer, storm drain and catch basin drainage applications.
3. Sand sediment water drainage and other applications of water drainage containing solid sediments.

AS SERIES CASING COVER

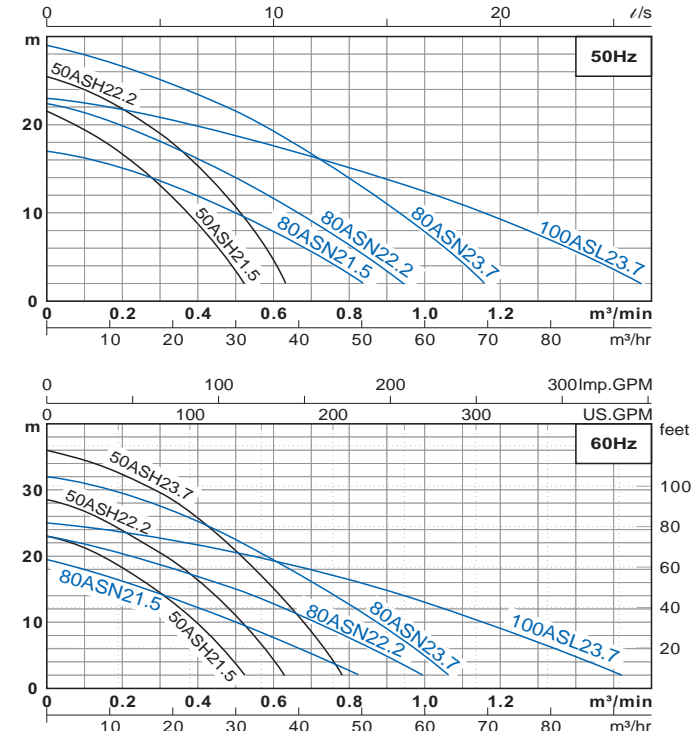
Model	mm		Adapter (Optional)	Bolts/Gasket Set (Optional)
	DA	DB		
80ASN21.5/2.2/3.7	67	140	ADT3"	BC-140
100ASL23.7	80	150	ADT3"/ADT3"x4"	BC-150



AS SERIES SPECIFICATIONS

Item	Description
Limits Of Use	Liquid Temp. 0-40°C (32-104°F)
	Applications Construction Site • Basins Dewatering
	Submersion Depth 30m (100feet)
Type	Frequency 50Hz & 60Hz
	Motor 2P • Dry Motor
	Insulation 2HP-3HP (1.5kW-2.2kW) : ClassB 5HP (3.7kW) : Class F
	Protection IP68
	Protector Auto-cut
	Bearing Ball Type
	M.seal Double M.seals
Material	Impeller Semi-open(ASH) • Enclosed-channel(ASN & ASL)
	Outer Cover SUS304
	Upper Cover FC-200
	Motor Frame FC-200
	Main Shaft SUS403
	M.seal Upper:Carbon/Ceramic • Lower:Silicon/Silicon
	Casing FC-200
	Impeller HiCr (High Chrome Steel)
	Wear Plate/Ring HiCr (High Chrome Steel)
	Cable VCT or H07RN-F or SJOW/SOW
Optional Pumps can be customized to fit specifications	

AS SERIES PERFORMANCE CURVES



AS SERIES PERFORMANCE SPEC.

Model	Power HP(kW)	Discharge inch(mm)	Motor		Standard				MAX		Weight(W/O Cable)		Dimensions (mm)			
			Phase Ø	Start Method	m-m³/min	m-m³/hr	m-m³/min	m-m³/hr	1Ø (kg)	3Ø (kg)	Passage (mm)	Width	Length	Height		
														1Ø	3Ø	
50ASH21.5	2 (1.5)	2" (50)	3	Capacitor Direct	15-0.25	15-15	21.5-0.55	21.5-33	40	36	10	-	235	511	466	
50ASH22.2	3 (2.2)	2" (50)	3	Capacitor Direct	19-0.3	19-18	25.5-0.65	25.5-39	44	39	10	-	235	511	466	
80ASN21.5	2 (1.5)	3" (80)	3	Capacitor Direct	10-0.5	10-30	17-0.9	17-54	40	36	10	-	235	511	466	
80ASN22.2	3 (2.2)	3" (80)	3	Capacitor Direct	14-0.5	14-30	22.5-1.0	22.5-60	45	39	10	-	235	511	466	
80ASN23.7	5 (3.7)	3" (80)	3	Direct	21.5-0.5	21.5-30	29-1.2	29-72	44	39	10	-	235	511	496	
100ASL23.7	5 (3.7)	4" (100)	3	Direct	12.5-1	12.5-60	23-1.65	23-99	44	39	10	-	235	511	511	

Model	Power HP(kW)	Discharge inch(mm)	Motor		Standard				MAX		Weight(W/O Cable)		Dimensions mm(inch)			
			Phase Ø	Start Method	m(ft)	m³/min (GPM)	m(ft)	m³/min (GPM)	1Ø (kg)	3Ø (kg)	Passage mm(inch)	Width	Length	Height		
														1Ø	3Ø	
50ASH21.5	2 (1.5)	2" (50)	3	Capacitor Direct	16.5(55)	0.25(66)	23(75)	0.55(145)	40(88)	36(79)	10(½")	-	235(9¼")	511(20")	466(18¼")	
50ASH22.2	3 (2.2)	2" (50)	3	Capacitor Direct	20.5(68)	0.3(80)	28.5(95)	0.65(172)	44(97)	39(86)	10(½")	-	235(9¼")	511(20")	466(18¼")	
50ASH23.7	5 (3.7)	2" (50)	3	Direct	29.5(98)	0.3(80)	36(118)	0.8(212)	44(97)	39(86)	10(½")	-	235(9¼")	511(20")	466(18¼")	
80ASN21.5	2 (1.5)	3" (80)	3	Capacitor Direct	10(32)	0.5(132)	19.5(65)	0.9(238)	40(88)	36(79)	10(½")	-	235(9¼")	511(20")	466(18¼")	
80ASN22.2	3 (2.2)	3" (80)	3	Capacitor Direct	15(50)	0.5(132)	23(75)	1.05(278)	44(97)	39(86)	10(½")	-	235(9¼")	511(20")	466(18¼")	
80ASN23.7	5 (3.7)	3" (80)	3	Direct	22.5(75)	0.5(132)	32(105)	1.1(290)	44(97)	39(86)	10(½")	-	235(9¼")	511(20")	496(19½")	
100ASL23.7	5 (3.7)	4" (100)	3	Direct	13(42)	1.0(265)	25(82)	1.6(422)	44(97)	39(86)	10(½")	-	235(9¼")	511(20")	511(20")	

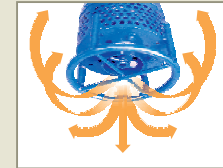
AG SERIES SUBMERSIBLE SLURRY DEWATERING PUMPS

AG SERIES FEATURE

1. IP68 standard for waterproof structure, automatic rest motor protector, and double mechanical seal made of silicon carbide. Very durable and abrasion resistance pump.
2. Compact and lightweight design makes it suitable for operation at smaller sites application.
3. High Chrome Alloy steel impeller, wear plate and wear rings withstand abrasion.
4. Equipped with a cast iron (FCD) agitator to create power stirring and pumping action for slurry.



Agitator



Stirring Action

AG SERIES APPLICATIONS

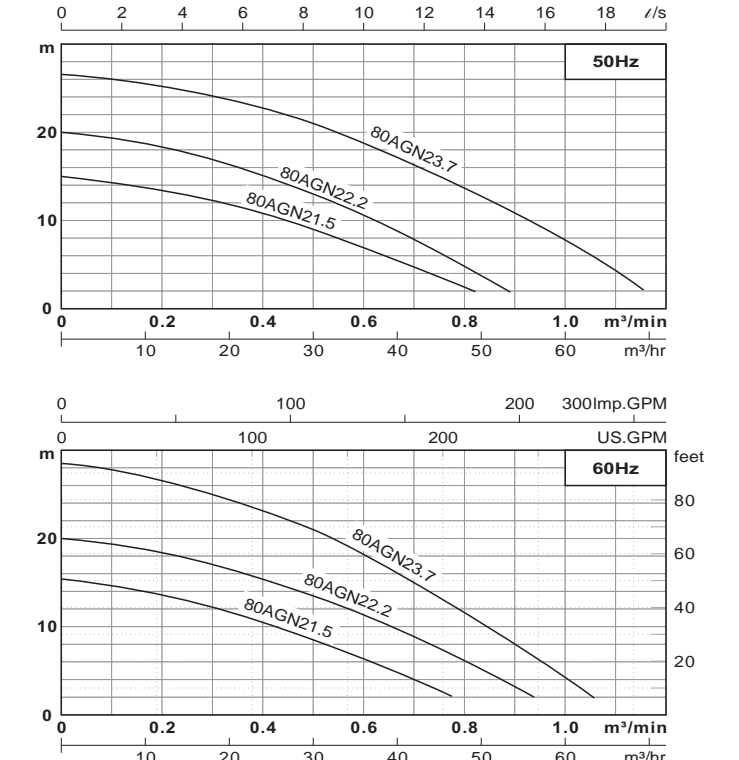
1. Civil engineering and other infrastructure water drainage applications
2. Tunnel and mining engineering water drainage
2. Manhole sewer, storm drain and catch basin drainage applications
3. Sand sediment water drainage and other applications of water drainage containing solid sediments



AG SERIES SPECIFICATIONS

Item	Description
Limits Of Use	Liquid Temp. 0-40°C (32-104°F)
	Applications Dewatering Fluid Contain Solid Sediment
	Submersion Depth 30m (100feet)
Type	Frequency 50Hz & 60Hz
	Motor 2P • Dry Motor
	Insulation 2HP-3HP (1.5kW-2.2kW) : ClassB 5HP (3.7kW) : Class F
	Protection IP68
	Protector Auto-cut
	Bearing Ball Type
	M.seal Double M.seals
Material	Impeller Enclosed-channel
	Outer Cover SUS304
	Upper Cover FC-200
	Motor Frame FC-200
	Main Shaft SUS403
	M.seal Upper:Carbon/Ceramic • Lower:Silicon/Silicon
	Casing FC-200
	Impeller HiCr (High Chrome Steel)
	Wear Ring HiCr (High Chrome Steel)
	Agitator FCD-700
Cable VCT or H07RN-F or SJOW/SOW	
Optional Pumps can be customized to fit specifications	

AG SERIES PERFORMANCE CURVES



AG SERIES PERFORMANCE SPEC.

Model	Power HP(kW)	Discharge inch(mm)	Motor		Standard				MAX		Weight(W/O Cable)		Dimensions (mm)			
			Phase Ø	Start Method	m-m³/min	m-m³/hr	m-m³/min	m-m³/hr	1Ø (kg)	3Ø (kg)	Passage (mm)	Width	Length	Height		
														1Ø	3Ø	
80AGN21.5	2 (1.5)	3" (80)	1	Capacitor Direct	9-0.5	9-30	15-0.9	15-54	41	36	10	-	260	592	547	
80AGN22.2	3 (2.2)	3" (80)	1	Capacitor Direct	13-0.5	13-30	20-0.95	20-57	45	40	10	-	260	622	547	
80AGN23.7	5 (3.7)	3" (80)	3	Direct	21-0.5	21-30	26.5-1.2	26.5-72	45	40	10	-	260	577	577	

Model	Power HP(kW)	Discharge inch(mm)	Motor		Standard				MAX		Weight(W/O Cable)		Dimensions mm(inch)			
			Phase Ø	Start Method	m(ft)	m³/min (GPM)	m(ft)	m³/min (GPM)	1Ø (kg)	3Ø (kg)	Passage mm(inch)	Width	Length	Height		
														1Ø	3Ø	
80AGN21.5	2 (1.5)	3" (80)	1	Capacitor Direct	8.5(28)	0.5(132)	15.5(50)	0.85(225)	41(90)	36(79)	10(½")	-	260(10¼")	592(23¼")	547(21½")	
80AGN22.2	3 (2.2)	3" (80)	1	Capacitor Direct	13.5(45)	0.5(132)	20(65)	1(265)	45(99)	39(86)	10(½")	-	260(10¼")	622(24½")	547(21½")	
80AGN23.7	5 (3.7)	3" (80)	3	Direct	21(70)	0.5(132)	28.5(95)	1.1(290)	45(99)	40(88)	10(½")	-	260(10¼")	577(22¾")	577(22¾")	